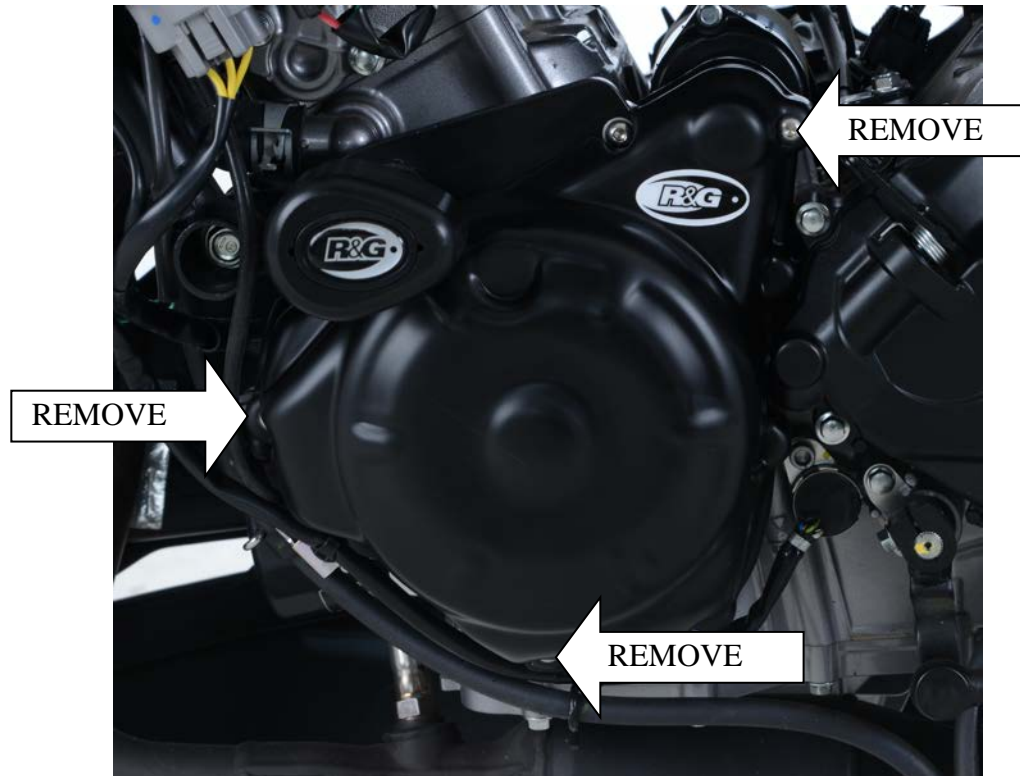


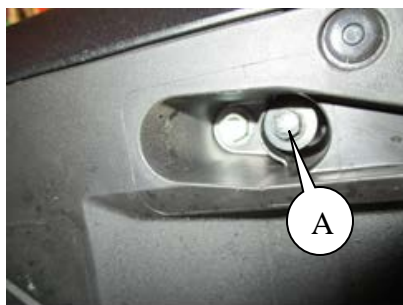


FITTING INSTRUCTIONS FOR ECC0237 LHS CRANKCASE COVER
HONDA CBR 250RR '17-



- In this kit there should be:
- 1x Engine Case Cover (ECC0237)
 - 3x M6 x 40mm Long Button Head Bolts
 - 3x Spacers (S0820)
 - 3x M6 Washers

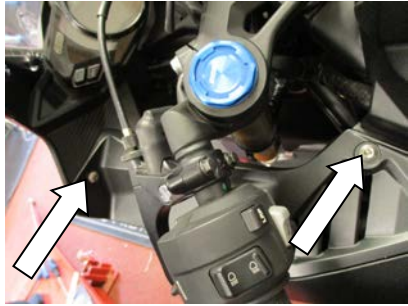
PLEASE READ THESE INSTRUCTIONS FULLY BEFORE STARTING



PICTURE 1



PICTURE 2



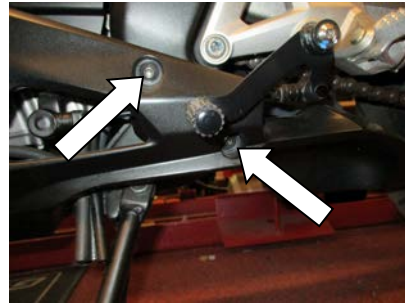
PICTURE 3



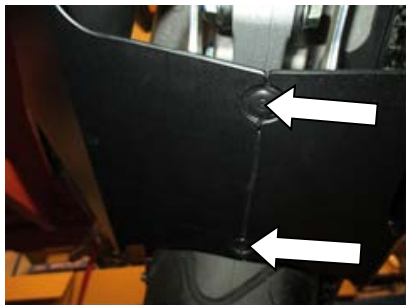
PICTURE 4



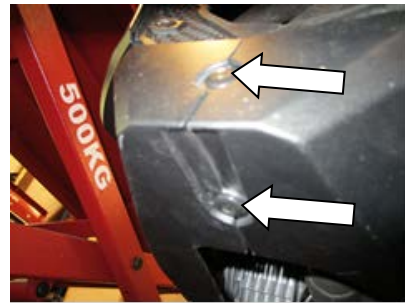
PICTURE 5



PICTURE 6



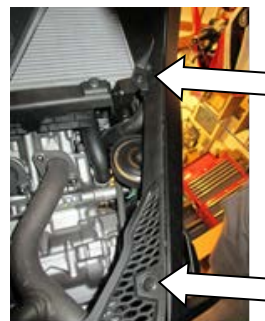
PICTURE 7



PICTURE 8



PICTURE 9



PICTURE 10



- Please make sure the engine is cold before proceeding with the fitting of the R&G cover.
- To fit R&G Engine case cover, The LHS fairing needs to be removed. From the underside of the rider seat, remove the two black bolts and its spacers using 10mm socket and a wrench, labelled A in Picture 1. Remove the rider seat.
- From picture 2, remove bolt A using 5mm Allen key and screw B using a phillips screwdriver. Remove the LHS panel by sliding it off backwards.
- From the upper top LHS fairing, remove the two bolts arrowed in Picture 3 using 5mm Allen key.
- From the inside of the same panel, remove the push-in pin arrowed in Picture 4. Push the centre of the pin then remove the whole pin unit.
- On the mid area of the LHS fairing, remove the bolt arrowed in Picture 5 using a 5mm Allen key.
- On the lower side rear of the LHS fairing, remove the two bolts arrowed in Picture 6 using a 5mm Allen key.
- On the underside rear of the LHS fairing, remove the two push-in pins arrowed in Picture 7.
- On the underside front of the LHS fairing, remove the two push in pins arrowed in Picture 8.
- On the inside upper LHS fairing, remove the push-in pin arrowed in Picture 9.
- On the inside mid and lower LHS fairing, remove the two push-in pins arrowed in Picture 10.
- Gently unclip the LHS fairing from the infill panel. Once fully unclipped, gently pull the fairing away from the bike.
- To fit the R&G engine case cover remove the three M6 engine case bolts in the positions arrowed above. Hold the cover loosely over the case to help identify the correct ones. **DO NOT REMOVE ALL OF THE CASE BOLTS.**
- Fit the three spacers into the three holes in the engine case cover (these should be a tight fit to secure in position while fitting, once tightened they will remain in position).
- Offer up the R&G cover to the engine and carefully fit it over the casing. Ensure that the three R&G bolts are lined up with the holes in the engine casing, and then push on as far as it will go.
- Please note the bolts marked with a star in the diagram require washers.
- Fit the bolts through the Engine Case Cover and into the engine case.
- With a 4mm Allen key tighten the bolts equally so that they pull the cover into place. **DO NOT FULLY TIGHTEN.**
- Finally use a torque wrench set at 10 N/m (7 Lb/ft) to fully tighten.
- Re-position the LHS fairing and re-fit all bolts as original.
- It is suggested that you check the tightness of the mounting bolts on a regular basis i.e. when cleaning or once a month.
- NOTE for the cleaning of this product you should only use a soft polishing cloth and a mild general cleaning agent.
- **AVOID HARMFUL CHEMICALS. IF IN DOUBT DO NOT USE AS THEY COULD ALTER THE STRENGTH OF THE COVER.**
- R&G will accept no liability if the above procedure and torque settings are not followed.

ISSUE 1 19/06/2017 (HH)

CONSUMER NOTICE

The catalogue description and any exhibition of samples are only broad indications of the Products and R&G may make design changes which do not diminish their performance or visual appeal and supplying them in such state shall conform to the order. The Buyer acknowledges no representation or warranty (other than as to title) has been given or will apply to the Products other than those in R&G's order or confirmation and the Buyer confirms it has chosen the Products as being of merchantable quality and suitable for its particular purposes. Where R&G fits the Products or undertakes other services it shall exercise reasonable skill and care and rectify any fault free of charge unless the workmanship has been disturbed. The Buyer is responsible for ensuring that the warranty on the motorcycle is not affected by the fitting of the Products. On return of any defective Products R&G shall at its option either supply a replacement or refund the purchase money but shall not be liable if the Products have been modified or used or maintained otherwise than in accordance with R&G's or manufacturer's instructions and good engineering practice or if the defect arises from accident or neglect. Other than identified above and subject to R&G not limiting its liability for causing death and personal injury, it shall not be liable for indirect or consequential loss and otherwise its liability shall be limited to the amounts paid by the Buyer for the Products or the fitting or service concerned. These terms do not affect the Buyer's statutory rights.

R&G Racing

Unit 1, Shelley's Lane, East Worldham, Alton, Hampshire, GU34 3AQ

Tel: +44 (0)1420 89007 Fax: +44 (0)1420 87301 www.rg-racing.com Email: info@rg-racing.com

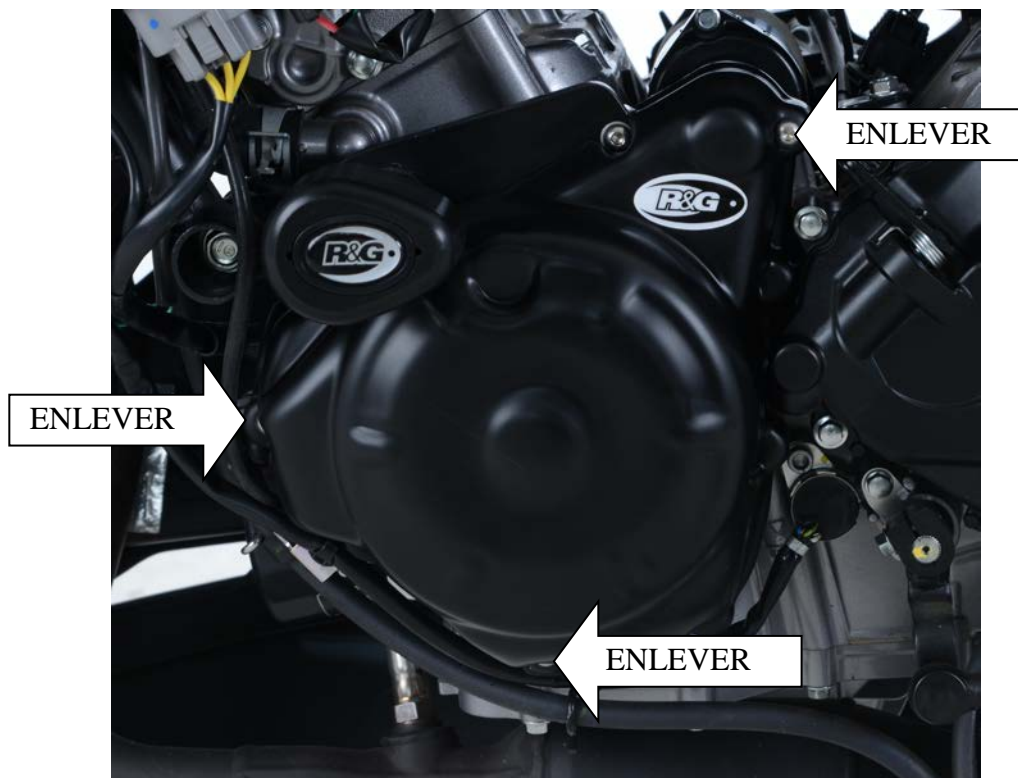


R&G RACING RETURNS POLICY (NON-FAULTY GOODS)

Returns must be pre-authorized (if not pre-authorized the return will be rejected). Goods may only be returned direct to us if they were purchased direct from us (customer must prove if necessary). Otherwise to be returned to original vendor. Goods must be in re-sellable condition, in the opinion of R&G Racing. All returns are subject to a 25% restocking and handling fee (25% of the gross value exc. P&P – at the prevailing price at time of purchase). The customer must pay any and all carriage charges. No returns of discontinued products, unless within 14 days of purchase. This policy does not affect your statutory rights and does not refer to faulty goods.



NOTICE DE MONTAGE POUR ECC0237 PROTECTION CARTER MOTEUR COTE GAUCHE
HONDA CBR 250RR '17-



Le kit doit contenir :

- 1 x Protection carter moteur (ECC0237)
- 3x M6 x 40mm Boulons
- 3x Entretoises (S0820)
- 3x M6 Rondelles

Bien lire ces instructions avant de procéder au montage :

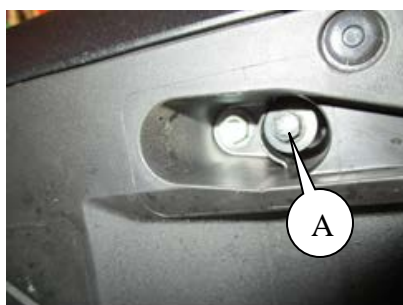


PHOTO 1



PHOTO 2

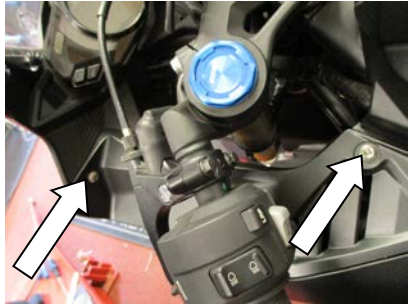


PHOTO 3



PHOTO 4



PHOTO 5

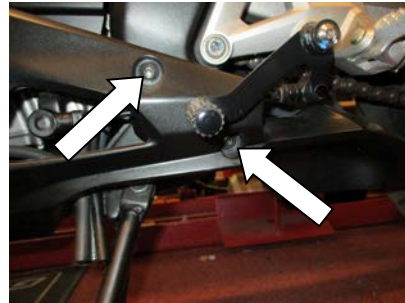


PHOTO 6

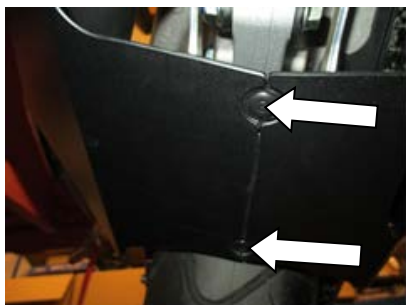


PHOTO 7

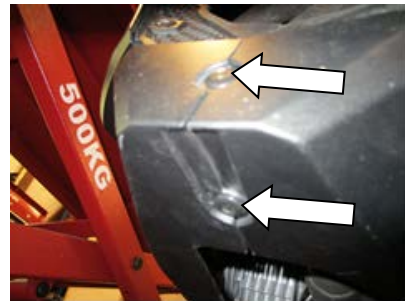


PHOTO 8



PHOTO 9

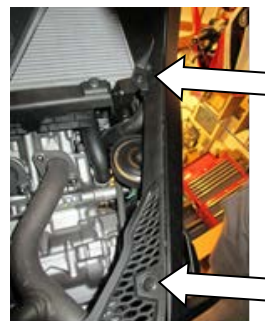


PHOTO 10



- Assurez-vous que le moteur soit froid.
- Pour monter la protection carter moteur R&G, le carénage gauche doit être enlevé. Par le dessous du siège pilote, enlever les 2 boulons noir et leur entretoise en utilisant une Clé à cliquet + douille 10mm, marqué A sur la Photo 1. Enlever le siège du pilote.
- Sur la photo 2, enlever le boulon A en utilisant une clé Allen 5mm Allen et visser B en utilisant un tournevis cruciforme. Enlever le panneau gauche en le glissant vers l'arrière.
- Depuis le haut du carénage gauche, enlever les 2 boulons indiqués sur la photo 3 en utilisant une clé Allen 5mm.
- Depuis l'intérieur du même panneau, enlever la broche indiquée sur la Photo 4. Presser le centre de la broche puis enlever l'ensemble de la broche.
- Au milieu du carénage gauche, enlever le boulon indiqué sur la Photo 5 en utilisant une clé Allen 5mm.
- Sur le bord inférieur arrière du carénage gauche, enlever les 2 boulons indiqués sur la Photo 6 en utilisant une clé Allen 5mm.
- Au-dessous et à l'arrière du carénage gauche, enlever les 2 broches indiquées sur la photo 7.
- Au-dessous et à l'avant du carénage gauche, enlever les 2 broches indiquées sur la Photo 8.
- Sur la partie supérieure à l'intérieur du carénage gauche, enlever la broche indiquée sur la photo 9.
- A l'intérieur, sur la partie inférieure et au milieu du carénage gauche, enlever les 2 broches indiquées sur la photo 10.
- Déclipser le carénage gauche du panneau interne. Une fois complètement déclipé, tirer le carénage de la moto.
- Pour monter la protection carter moteur, enlever les 3 boulons moteur dans les positions indiquées ci-dessus. Tenir le couvercle autour du carter pour aider à les identifier. **NE PAS ENLEVER TOUS LES BOULONS DE CARTER.**
- Insérer 3 entretoises dans les 3 trous de la protection carter moteur (L'ajustement sera certainement juste, mais une fois serrées elles tiendront en position).
- Mettre la protection R&G en place en faisant bien attention. S'assurer que les 3 boulons R&G soient alignés avec les trous, puis, une fois cela vérifié, pousser la protection jusqu'à la limite.
- Notez que les boulons marqués d'une étoile sur le schéma requièrent des rondelles.
- Insérer les boulons dans la protection carter moteur et dans le carter moteur.
- Serrer les boulons avec une clé Allen de 4mm, pour qu'ils placent la protection en place. **NE PAS SERRER COMPLETEMENT.**
- Utiliser une clé dynamométrique à 10 Nm (7 Lb ft) pour bloquer).
- Repositionner le carénage gauche et réinsérer les boulons comme à l'origine.
- Nous vous suggérons de vérifier le serrage au moins une fois par mois, lors du nettoyage par exemple.
- **NOTE:** Pour le nettoyage, vous devriez utiliser uniquement un chiffon doux et un agent nettoyant doux.
- Ne pas utiliser d'agents chimiques qui pourraient altérer l'efficacité de la protection.
- R&G n'acceptera aucune responsabilité en cas de mauvais couple de serrage ou d'utilisation inappropriée d'agents nocifs.

ISSUE 1 19/06/2017 (HH)

CONSUMER NOTICE

The catalogue description and any exhibition of samples are only broad indications of the Products and R&G may make design changes which do not diminish their performance or visual appeal and supplying them in such state shall conform to the order. The Buyer acknowledges no representation or warranty (other than as to title) has been given or will apply to the Products other than those in R&G's order or confirmation and the Buyer confirms it has chosen the Products as being of merchantable quality and suitable for its particular purposes. Where R&G fits the Products or undertakes other services it shall exercise reasonable skill and care and rectify any fault free of charge unless the workmanship has been disturbed. The Buyer is responsible for ensuring that the warranty on the motorcycle is not affected by the fitting of the Products. On return of any defective Products R&G shall at its option either supply a replacement or refund the purchase money but shall not be liable if the Products have been modified or used or maintained otherwise than in accordance with R&G's or manufacturer's instructions and good engineering practice or if the defect arises from accident or neglect. Other than identified above and subject to R&G not limiting its liability for causing death and personal injury, it shall not be liable for indirect or consequential loss and otherwise its liability shall be limited to the amounts paid by the Buyer for the Products or the fitting or service concerned. These terms do not affect the Buyer's statutory rights.

R&G RACING RETURNS POLICY (NON-FAULTY GOODS)

Returns must be pre-authorised (if not pre-authorised the return will be rejected). Goods may only be returned direct to us if they were purchased direct from us (customer must prove if necessary). Otherwise to be returned to original vendor. Goods must be in re-sellable condition, in the opinion of R&G Racing. All returns are subject to a 25%

R&G Racing

Unit 1, Shelley's Lane, East Worldham, Alton, Hampshire, GU34 3AQ

Tel: +44 (0)1420 89007 Fax: +44 (0)1420 87301 www.rg-racing.com Email: info@rg-racing.com



restocking and handling fee (25% of the gross value exc. P&P – at the prevailing price at time of purchase). The customer must pay any and all carriage charges. No returns of discontinued products, unless within 14 days of purchase. This policy does not affect your statutory rights and does not refer to faulty goods.